



Gert Van Zyl
084 410 9242
gert@realandproper.co.za

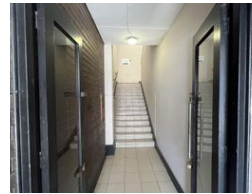
Contact Head Office

039 9407325

No 1 Bank Street (Corner Bank Street and Marine Drive)
Margate
KwaZulu Natal



Web Ref CL97



R11,000,000

0 0

PRIME COMMERCIAL PROPERTY IN CENTRAL PORT SHEPSTONE!!!

Prime Commercial Property with Rooftop Views - A Versatile Investment Opportunity

Welcome to an exceptional commercial property that is well-known for its impressive rooftop views. This property is a haven for investors and entrepreneurs alike, offering multiple office spaces and private consultation rooms for independent professionals. Additionally, it presents an enticing development opportunity, with ample room for renovation and expansion, including adjacent land.

Property Highlights:

Rooftop Splendor: Enjoy breathtaking rooftop views that will leave a lasting impression on your clients and employees. This unique feature sets this property apart.

Investment Potential: Whether you're an investor seeking reliable rental income or an entrepreneur looking to establish your

Features

Title	Share Block
Zoning	Commercial
Sizes	
Floor Size	1,015m ²
Land Size	1,012m ²