



Garnett Coetzee
082 874 3840
garnett@realandproper.co.za



Gert Van Zyl
084 410 9242

gert@realandproper.co.za

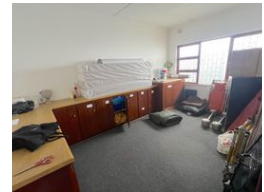
Contact Head Office

039 9407325

No 1 Bank Street (Corner Bank Street and Marine Drive)
Margate
KwaZulu Natal



Web Ref CL98



R995,000

0 0

Commercial rent income

I'm Garnett Coetzee, your hardworking agent eager to guide you through your purchasing journey. Count on me to ensure a smooth and successful experience. Let's team up and make your buying dreams a reality.

Looking to make an investment in the thriving commercial property market or secure your own office space? Look no further, as this property presents a prime opportunity.

Located in the heart of Port Shepstone, this property boasts not one, but two title deeds, comprising an 86m² unit and a 19m² unit, as indicated in the provided photos.

As you step through the front gate, you'll be greeted by a secure access-controlled entrance leading to your very own reception area. Beyond this point lies a communal hall, shared with two other sections. Upon entering the 86m² unit, you'll find a welcoming

Features

Title	Sectional				
Zoning	Mixed Use				
Interior			Exterior		Sizes
Air Conditioning	Yes		Security	Yes	Floor Size
					105m ²
Extras					
Airconditioner Reception area Store room Burglar bars Backup water Acces control Alarm CCTV					

