

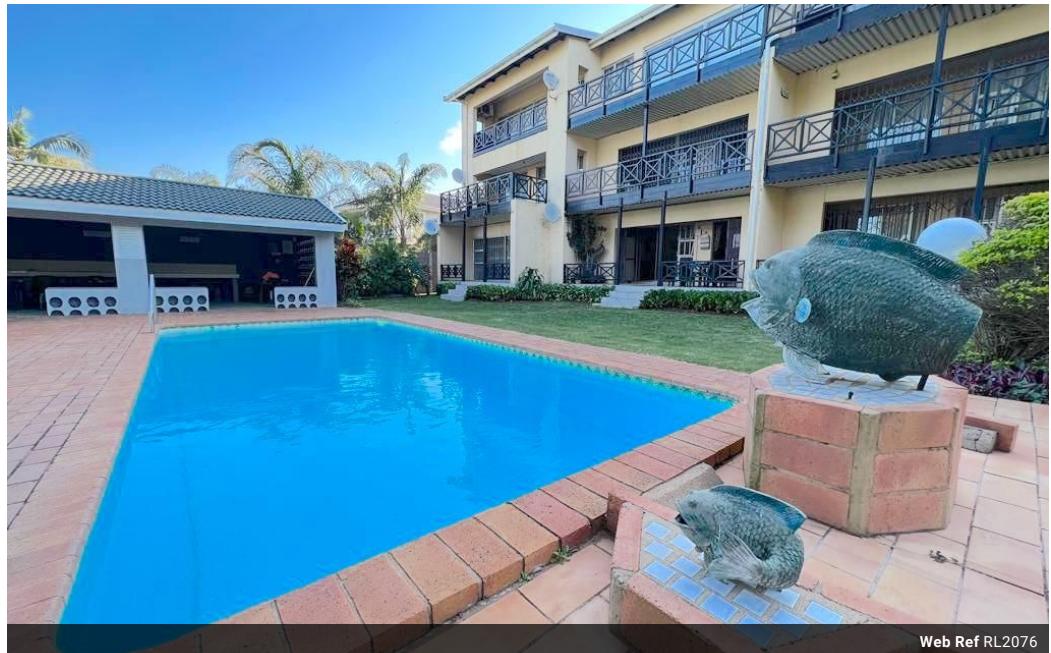


Garnett Coetzee
082 874 3840
garnett@realandproper.co.za

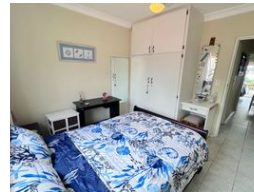
Contact Head Office

039 9407325

No 1 Bank Street (Corner Bank Street and Marine Drive)
Margate
KwaZulu Natal



Web Ref RL2076



R1,150,000

2 1

Monthly Bond Repayment R11,870.17
Calculated over 20 years at 11% with no deposit.

Transfer Costs R32,749.00 **Bond Costs** R25,220.00

These calculations are only a guide. Please ask your conveyancer for exact calculations.

Monthly Levy R2,300 **Monthly Rates** R1,100

2 Bedroom fully furnished pet friendly

Listed 12/02/2025

Welcome to your dream home at Shelly Beach! This picturesque ground floor unit combines style and comfort to provide you with the ultimate coastal living experience.

As you step through the front door, you'll be captivated by the open plan living areas that seamlessly flow from the dining area to the lounge. The breathtaking views from the lounge and the quick access to the swimming pool make this space perfect for both relaxing and entertaining.

Calling all food enthusiasts! The unit boasts a beautiful kitchen with granite tops, a gas stove, and ample cupboard space. Imagine preparing delicious meals while enjoying quality time with your family in the lounge, all while gazing out at the mesmerising ocean views.

The unit features two well-appointed bedrooms, each equipped with built-in cupboards. However,...

Features

Pets Allowed Yes

Interior

Bedrooms 2
Bathrooms 1
Kitchens 1
Recep. Rooms 1.5
Furnished Yes

Exterior

Carports / Parkings 1
Security Yes
Pool Yes
Views True

Sizes

Floor Size 89m²

Extras

Ground Floor Air Conditioner Granite Tops Backup Water Laundry Gas Hob

