



Graeme Gawler
082 321 1359
graeme@realandproper.co.za



Gert Van Zyl
084 410 9242

gert@realandproper.co.za

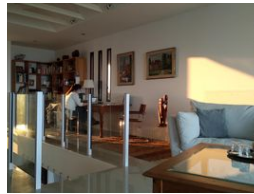
Contact Head Office

039 9407325

No 1 Bank Street (Corner Bank Street and Marine Drive)
Margate
KwaZulu Natal



Web Ref RL823



R4,350,000

🛏 3 🚿 3.5 🏠 2

Monthly Bond Repayment R44,900.20
Calculated over 20 years at 11% with no deposit.

Transfer Costs R324,341.00 **Bond Costs** R55,380.00
These calculations are only a guide. Please ask your conveyancer for exact calculations.

Monthly Levy R1,600 **Monthly Rates** R2,265

Eco bahari estate with a sunrise sea view

I am the result of an architects dream realised, with no time spared in the planning of my construction. With my sea and forest views from all living areas to the sustainable internal designs, you will experience the lifestyle of bush and ocean combined. Bahari Estate formerly known as Sunrise Bay, is situated on 100ha of prime land with forest and sea views. The estate is secure with 24 hour surveillance, and well situated with schools, hospitals and shopping malls within a 5km radius. The Estate boasts wetland and coastal forest with 9 dams, numerous species of roaming buck, small game, and a prolific bird life, with direct river frontage & beach access. The cavity walls, filled with Styrofoam and recessed tinted windows to the West/South-West facades, restricts heat and sound. The double-volume high tinted thermo...

Features

| | | | | | |
|---------------------|-----|---------------------|------|--------------|---------------------|
| Pets Allowed | Yes | | | | |
| Interior | | Exterior | | Sizes | |
| Bedrooms | 3 | Garages | 2 | Floor Size | 369m ² |
| Bathrooms | 3.5 | Carports / Parkings | 2 | Land Size | 1,048m ² |
| Kitchens | 1 | Security | Yes | | |
| Recep. Rooms | 2 | Pool | Yes | | |
| Studies | 1 | Views | True | | |
| Furnished | No | | | | |
| Extras | | | | | |
| View of Water | | | | | |

