



Garnett Coetzee
082 874 3840
garnett@realandproper.co.za



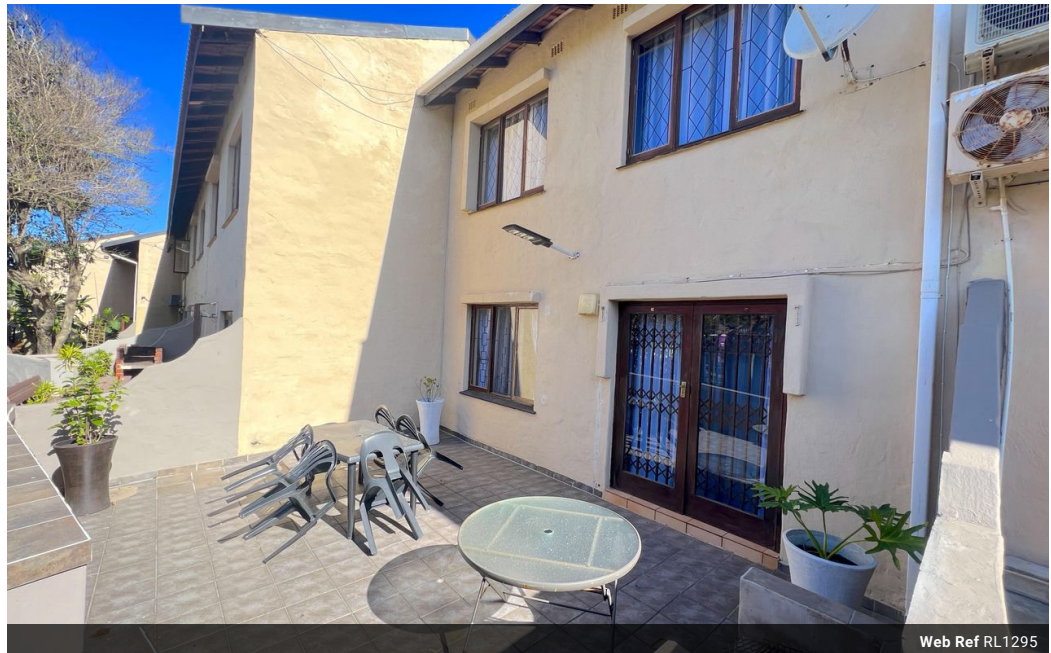
Gert Van Zyl
084 410 9242

gert@realandproper.co.za

Contact Head Office

039 9407325

No 1 Bank Street (Corner Bank Street and Marine Drive)
Margate
KwaZulu Natal



Web Ref RL1295



R949,000

3 2.5 1

Monthly Bond Repayment R9,795.47
Calculated over 20 years at 11% with no deposit.

Transfer Costs R30,412.00 **Bond Costs** R23,335.00

These calculations are only a guide. Please ask your conveyancer for exact calculations.

Monthly Levy R2,300 **Monthly Rates** R900 **Special Levy** R35

Coastal Paradise in Shelly Beach

Updated to 18/10/2024

Hi i'm Garnett Coetzee, your hardworking agent eager to guide you through your purchasing journey. Count on me to ensure a smooth and successful experience. Let's team up and make your buying dreams a reality.

Welcome to this exquisite duplex unit nestled in the serene locale of Shelly Beach, where endless possibilities await you.

Whether you're in search of a tranquil holiday retreat to escape the hustle and bustle of daily life or seeking a permanent residence or potential rental income, this versatile unit caters to your every need.

As you step through the inviting front door, you'll find yourself in a well-designed space featuring a hallway that provides access to the kitchen, lounge, and the upper level.

The kitchen boasts a combination of practicality and elegance, featuring standard built-in...

Features

Interior		Exterior		Sizes	
Bedrooms	3	Garages	1	Floor Size	110m ²
Bathrooms	2.5	Security	Yes		
Kitchens	1	Pool	No		
Recep. Rooms	1.5	Views	False		
Furnished	No				