



**Gail Mortimer**  
082 551 8196  
gail@realandproper.co.za



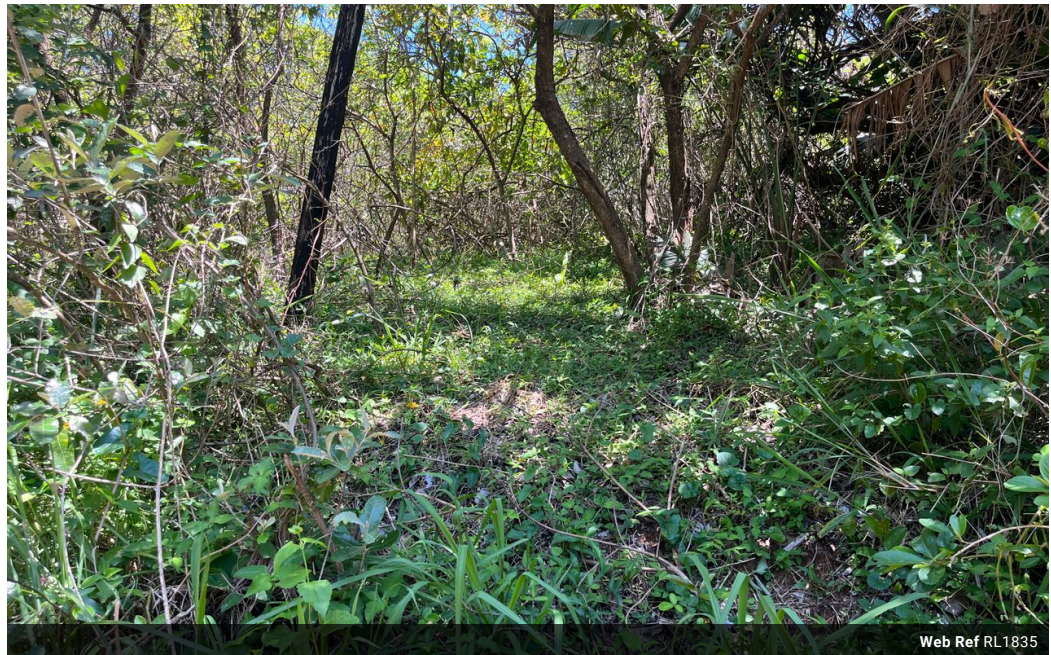
**Gert Van Zyl**  
084 410 9242

gert@realandproper.co.za

Contact Head Office

039 9407325

No 1 Bank Street (Corner Bank Street and Marine Drive)  
Margate  
KwaZulu Natal



Web Ref RL1835



**R220,000**

**Monthly Bond Repayment** R2,270.81  
Calculated over 20 years at 11% with no deposit.

**Transfer Costs** R13,821.00    **Bond Costs** R9,510.00  
These calculations are only a guide. Please ask your conveyancer for exact calculations.

### Prime Land for Sale in Palm Beach - Build your Dream Home

Seize the opportunity to own a stunning piece of land in the highly sought-after Palm Beach area! This 2047 m<sup>2</sup> plot, located inland, just 500 meters off the N2 highway, offers an ideal setting to build your dream home in a tranquil and peaceful environment. Whether you're looking to create a private retreat or a family haven, this gently sloping land offers exceptional potential. An added bonus is a beautiful distant sea view.

#### Property Features:

**Size:** Generous 2056 m<sup>2</sup> plot, offering ample space for your vision.

**Topography:** The land is gently sloping, providing beautiful views and adding character to your property. Clearing of the current vegetation and trees will be required, giving you the freedom to shape the land as you desire.

**Location:** Just 500 meters inland from the N2 highway, providing easy access to the main...

### Features

